

The Chinese Garden

for Xuefei Yang

Stephen Goss (2007)

edited by Xuefei Yang and Stephen Goss

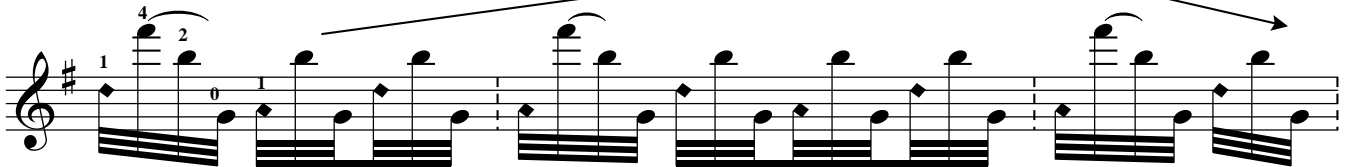
1. Jasmine Flower (Mo Li Hua)

Very freely, always blurred and resonant

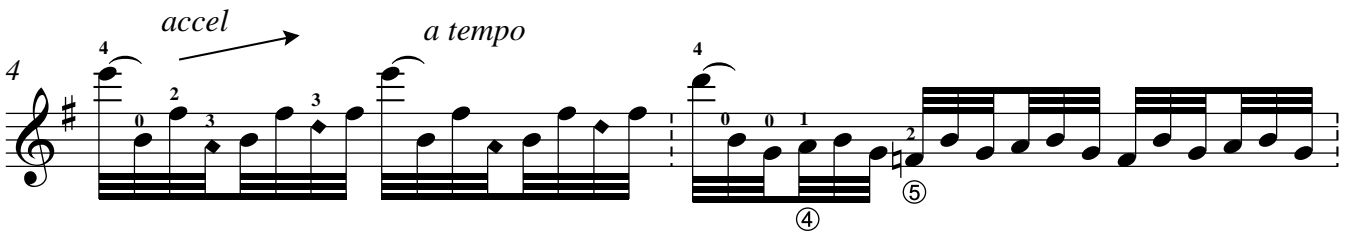
gradually speeding up to tempo *accel*

a tempo ♩ = c. 144

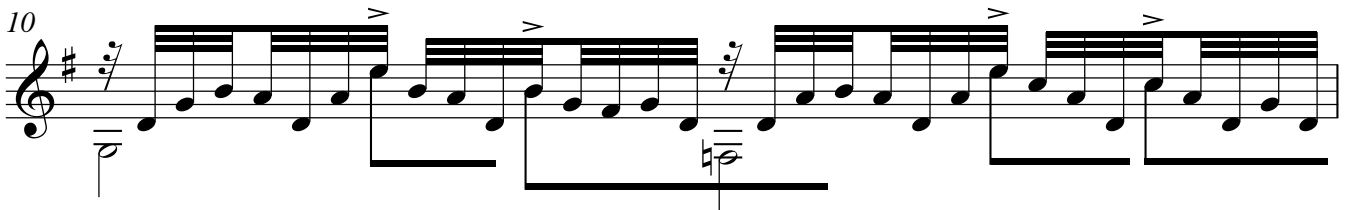
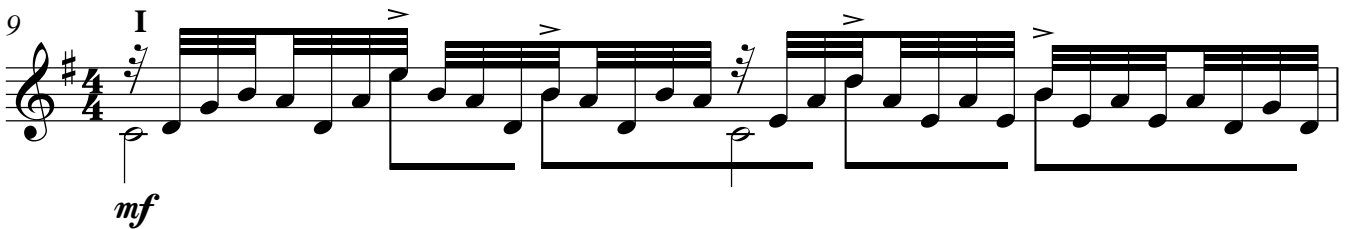
rit



p sempre l.v. (hold the shape and let everything ring on)



More in time ♩ = c. 72



molto espressivo

mp (melody and bass)

12

ppp bisb. (background)

13

CIII

1 3 2 1

4

a

9

14

15

16

17

18